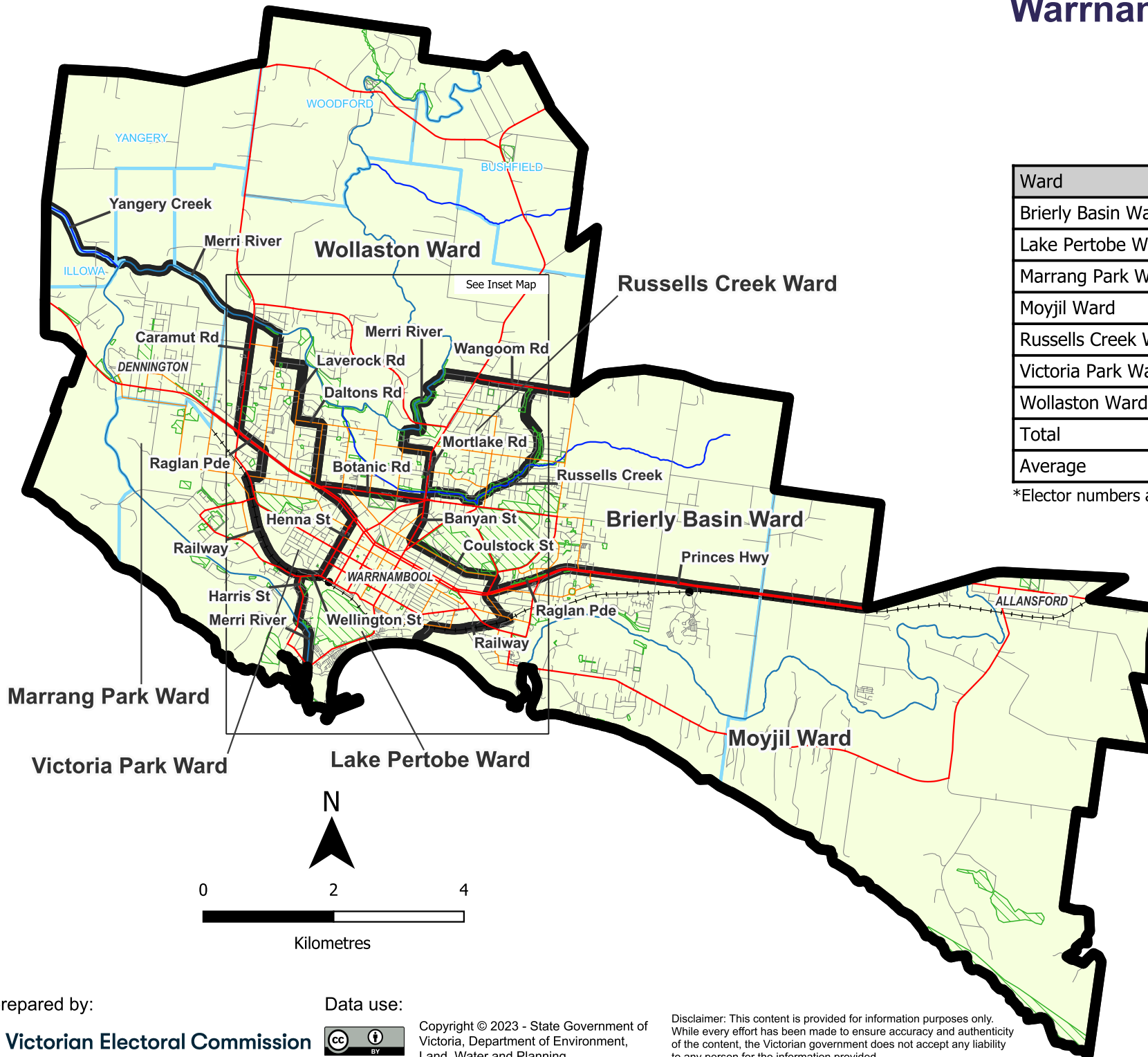


Warrnambool City Council

Model 1

7 single-councillor wards



Ward	Electors*	Deviation	Area sq km
Brierly Basin Ward	3,840	-3.07%	16
Lake Pertobe Ward	4,272	+7.84%	5
Marrang Park Ward	3,761	-5.06%	17
Moyjil Ward	3,818	-3.62%	39
Russells Creek Ward	4,120	+4.0%	3
Victoria Park Ward	4,192	+5.82%	4
Wollaston Ward	3,728	-5.9%	37
Total	27,731		120
Average	3,962		17

*Elector numbers as at 30 March 2023

Legend

- Proposed boundaries
- Existing ward(s)
- Warrnambool City
- Map symbols
- Freeways
- Main roads
- Collector roads
- Minor roads
- Railways
- Railway stations
- Lakes
- Rivers & creeks
- Parks & reserves
- Locality boundaries

Map prepared by:



Data use:



Copyright © 2023 - State Government of Victoria, Department of Environment, Land, Water and Planning

Disclaimer: This content is provided for information purposes only. While every effort has been made to ensure accuracy and authenticity of the content, the Victorian government does not accept any liability to any person for the information provided.

Warrnambool City Council

Inset - Model 1

