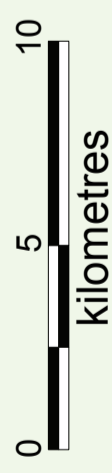
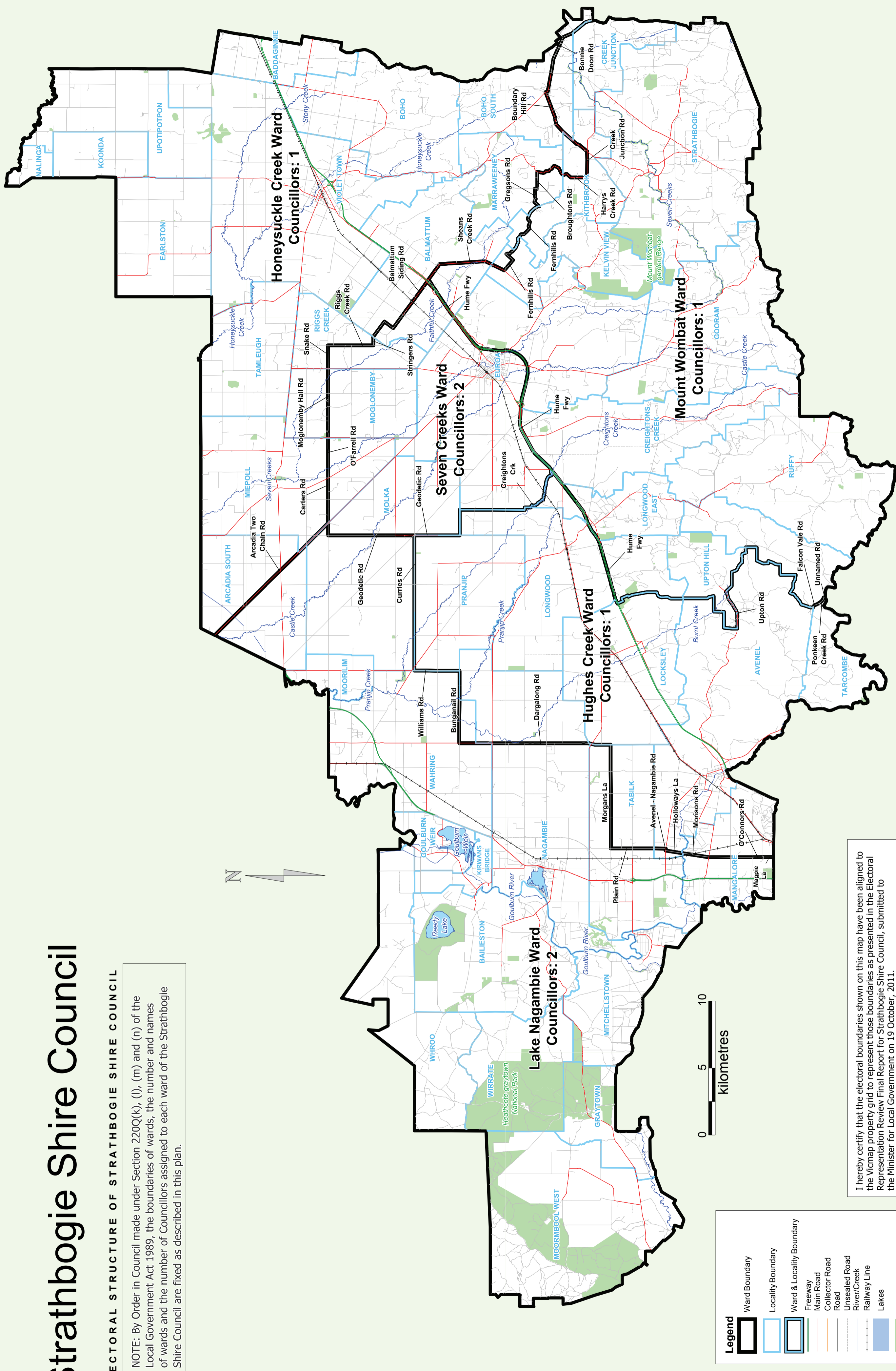


Strathbogrie Shire Council

ELECTORAL STRUCTURE OF STRATHBOGRIE SHIRE COUNCIL

NOTE: By Order in Council made under Section 220Q(k), (l), (m) and (n) of the Local Government Act 1989, the boundaries of wards, the number and names of wards and the number of Councillors assigned to each ward of the Strathbogrie Shire Council are fixed as described in this plan.



Legend

- Ward Boundary
- Locality Boundary
- Ward & Locality Boundary
- Freeway
- Main Road
- Collector Road
- Road
- Unsealed Road
- River/Creek
- Railway Line
- Lakes
- Parks & reserves

Data sets for alignment:
 Locality as at Aug. 2011
 Property Grid as at May 2011

I hereby certify that the electoral boundaries shown on this map have been aligned to the Vicmap property grid to represent those boundaries as presented in the Electoral Representation Review Final Report for Strathbogrie Shire Council, submitted to the Minister for Local Government on 19 October, 2011.

Steven Tully, Electoral Commissioner

Electoral Structure of
Strathbogrie Shire Council

LEGL./11-111