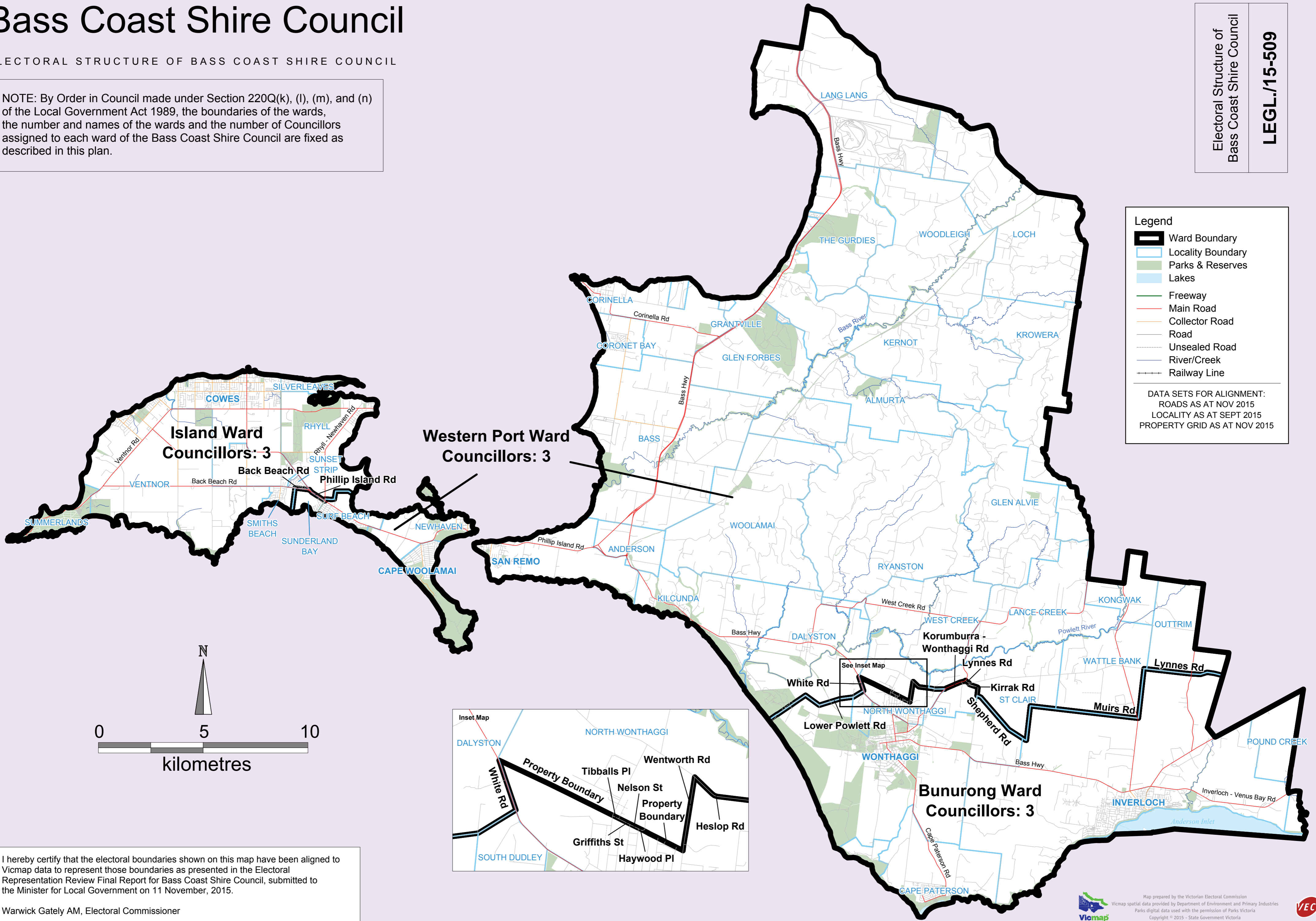


Bass Coast Shire Council

ELECTORAL STRUCTURE OF BASS COAST SHIRE COUNCIL

NOTE: By Order in Council made under Section 220Q(k), (l), (m), and (n) of the Local Government Act 1989, the boundaries of the wards, the number and names of the wards and the number of Councillors assigned to each ward of the Bass Coast Shire Council are fixed as described in this plan.

Electoral Structure of
Bass Coast Shire Council
LEGL./15-509



I hereby certify that the electoral boundaries shown on this map have been aligned to Vicmap data to represent those boundaries as presented in the Electoral Representation Review Final Report for Bass Coast Shire Council, submitted to the Minister for Local Government on 11 November, 2015.

Warwick Gately AM, Electoral Commissioner