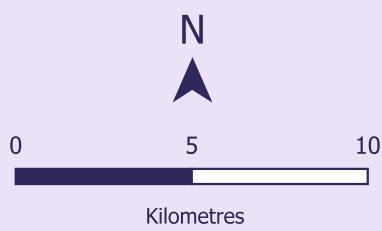
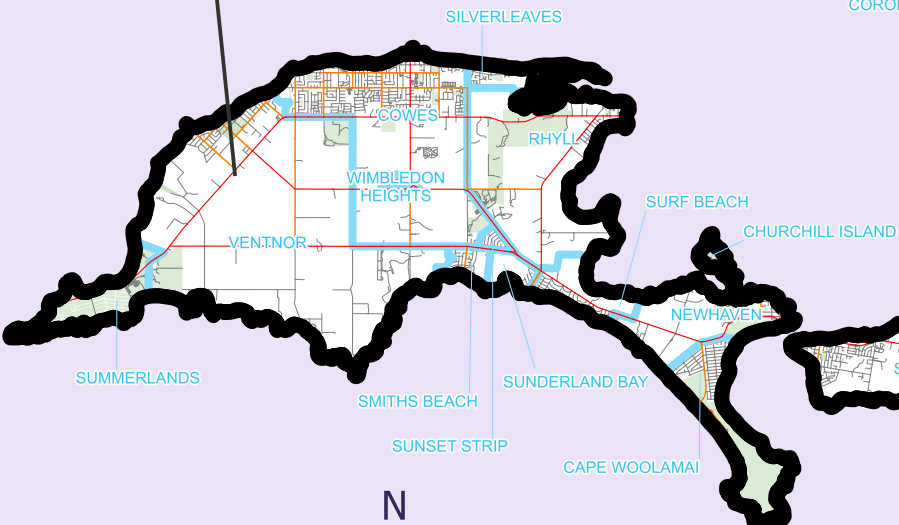


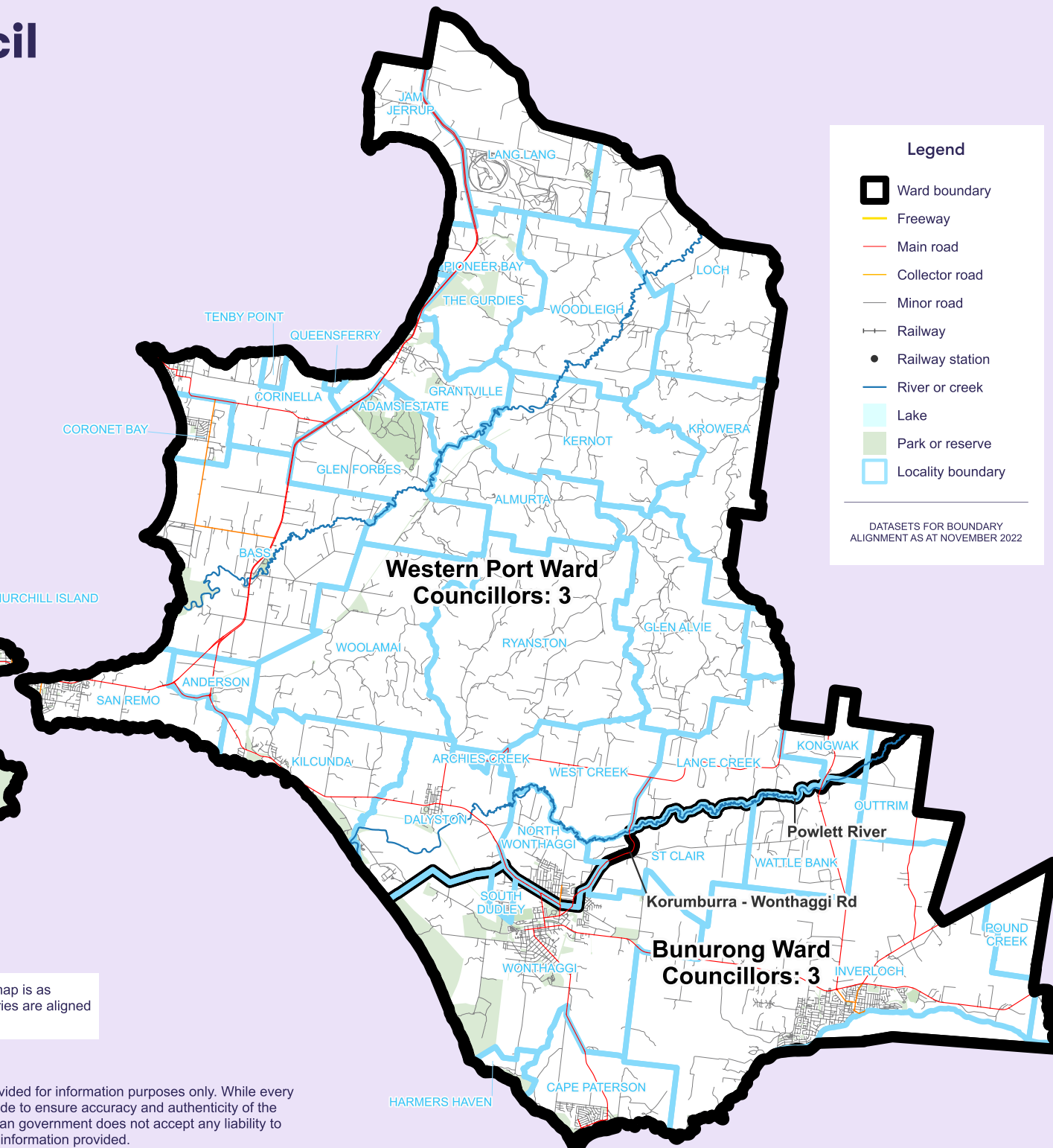
Bass Coast Shire Council Electoral Structure

NOTE: By Order in Council under section 15(1)(b)(iii) of the Local Government Act 2020, the boundaries of wards of the municipal district of the Bass Coast Shire Council are specified as described in this map.

Island Ward Councillors: 3



Western Port Ward Councillors: 3



Bunurong Ward Councillors: 3

Legend

- Ward boundary
- Freeway
- Main road
- Collector road
- Minor road
- Railway
- Railway station
- River or creek
- Lake
- Park or reserve
- Locality boundary

DATASETS FOR BOUNDARY ALIGNMENT AS AT NOVEMBER 2022

The electoral structure (number of councillors and any internal ward boundaries) in this map is as presented to the Minister for Local Government on the 10th April 2024. Electoral boundaries are aligned to the VicMap spatial datasets as defined in the legend on this map.