

# Mornington Peninsula Shire Council

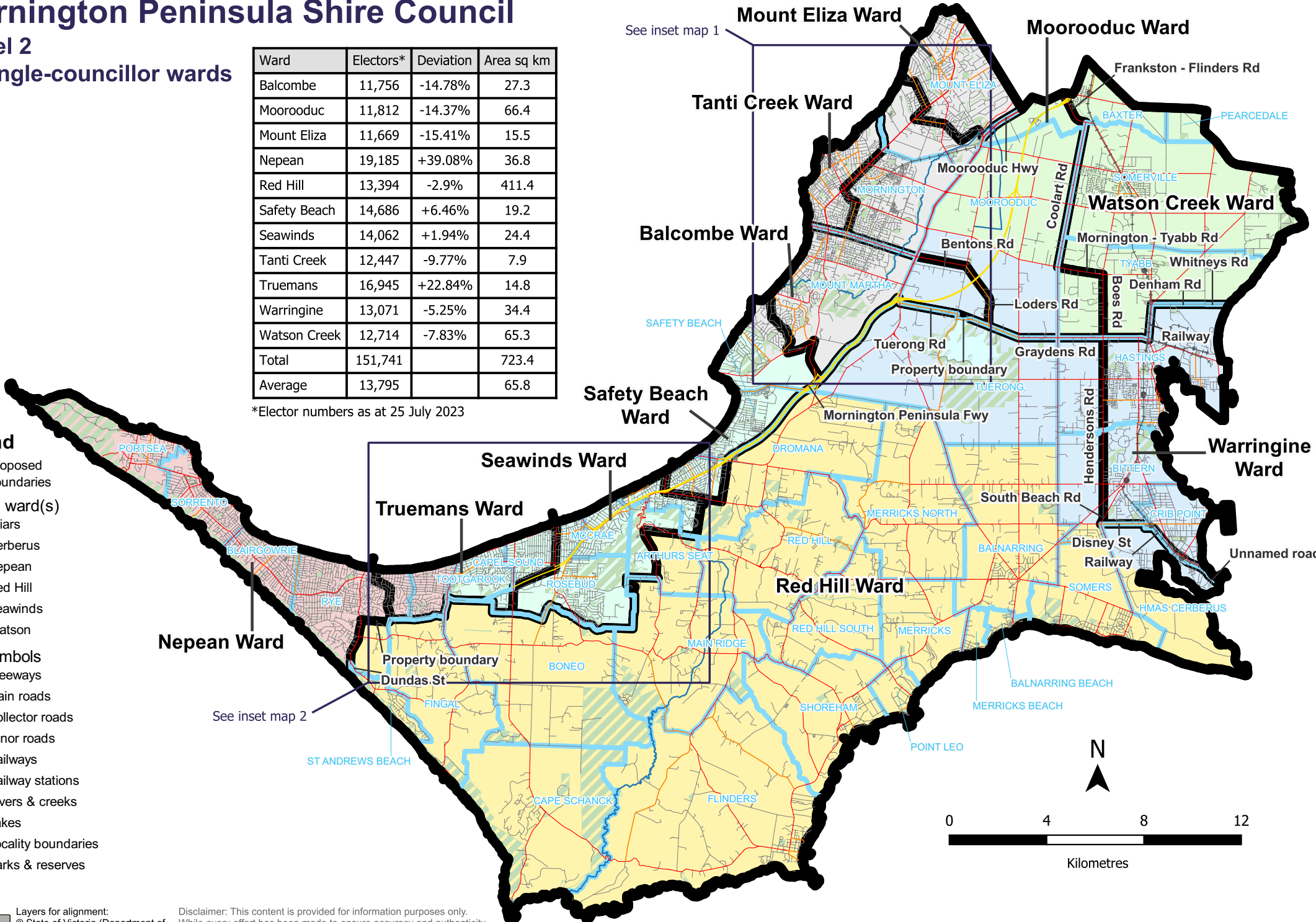
## Model 2 11 single-councillor wards

Ward	Electors*	Deviation	Area sq km
Balcombe	11,756	-14.78%	27.3
Moorooduc	11,812	-14.37%	66.4
Mount Eliza	11,669	-15.41%	15.5
Nepean	19,185	+39.08%	36.8
Red Hill	13,394	-2.9%	411.4
Safety Beach	14,686	+6.46%	19.2
Seawinds	14,062	+1.94%	24.4
Tanti Creek	12,447	-9.77%	7.9
Truemans	16,945	+22.84%	14.8
Warringine	13,071	-5.25%	34.4
Watson Creek	12,714	-7.83%	65.3
<b>Total</b>	<b>151,741</b>		<b>723.4</b>
<b>Average</b>	<b>13,795</b>		<b>65.8</b>

\*Elector numbers as at 25 July 2023

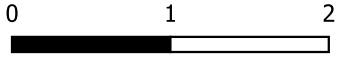
**Legend**

- Proposed boundaries
- Existing ward(s)**
  - Briars
  - Cerberus
  - Nepean
  - Red Hill
  - Seawinds
  - Watson
- Map Symbols**
  - Freeways
  - Main roads
  - Collector roads
  - Minor roads
  - Railways
  - Railway stations
  - Rivers & creeks
  - Lakes
  - Locality boundaries
  - Parks & reserves

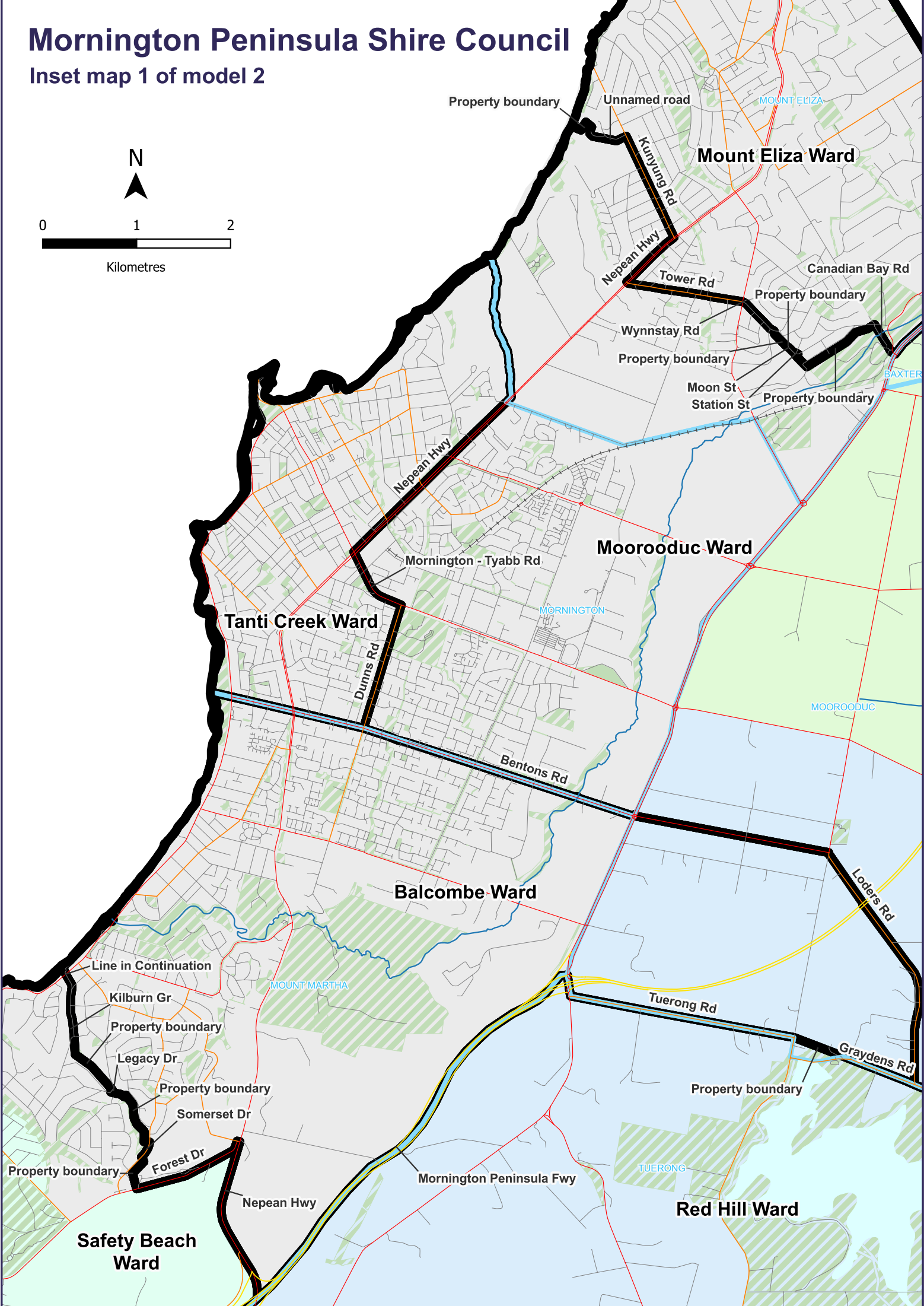


# Mornington Peninsula Shire Council

## Inset map 1 of model 2

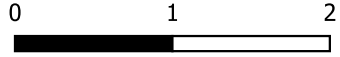


Kilometres



# Mornington Peninsula Shire Council

## Inset map 2 of model 2



Kilometres

