

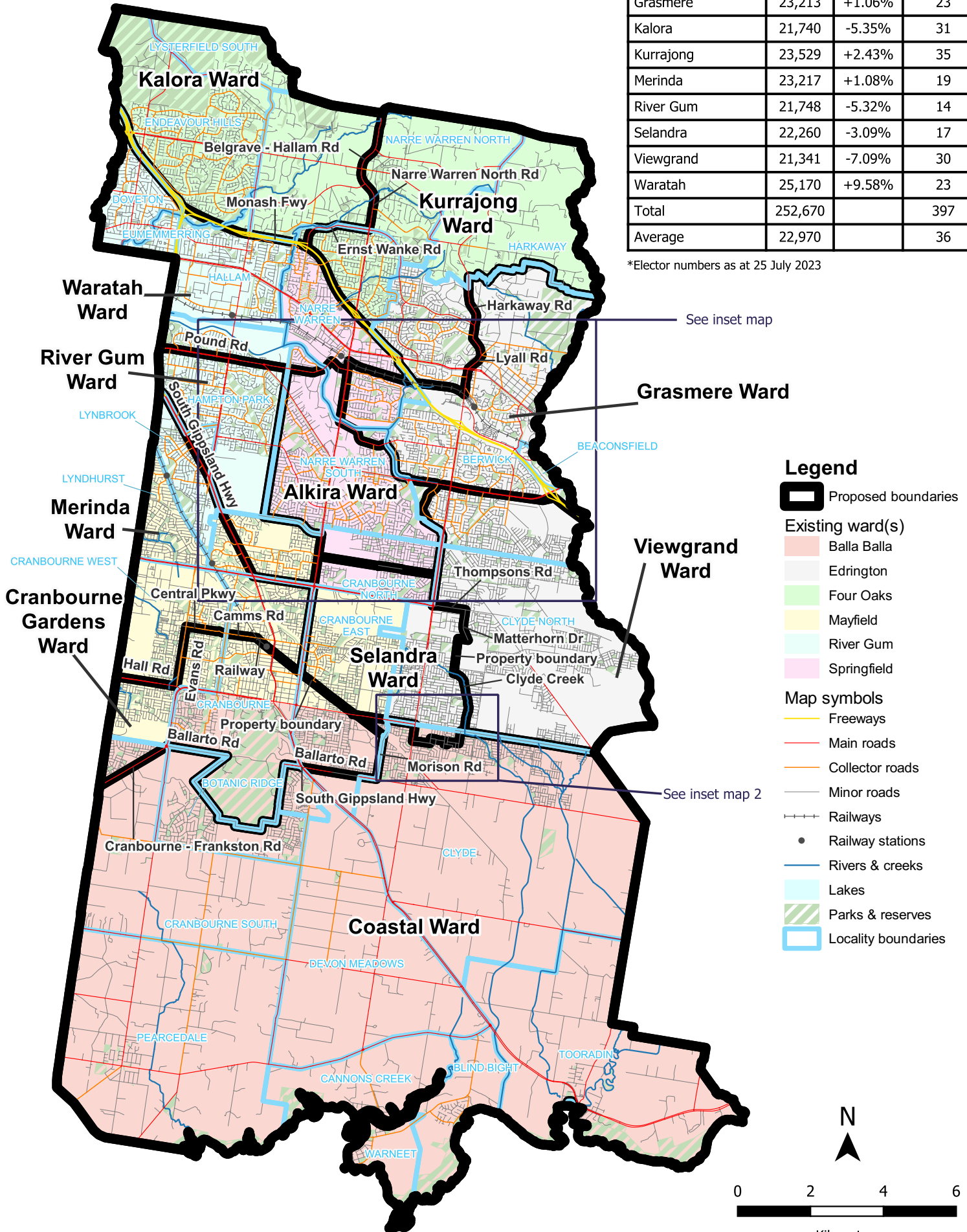
# Casey City Council

## Model 1

### 11 single-councillor wards

Ward	Electors*	Deviation	Area sq km
Alkira	23,434	+2.02%	16
Coastal	23,016	+0.2%	165
Cranbourne Gardens	24,002	+4.49%	23
Grasmere	23,213	+1.06%	23
Kalora	21,740	-5.35%	31
Kurrajong	23,529	+2.43%	35
Merinda	23,217	+1.08%	19
River Gum	21,748	-5.32%	14
Selandra	22,260	-3.09%	17
Viewgrand	21,341	-7.09%	30
Waratah	25,170	+9.58%	23
<b>Total</b>	<b>252,670</b>		<b>397</b>
<b>Average</b>	<b>22,970</b>		<b>36</b>

\*Elector numbers as at 25 July 2023



Data use:

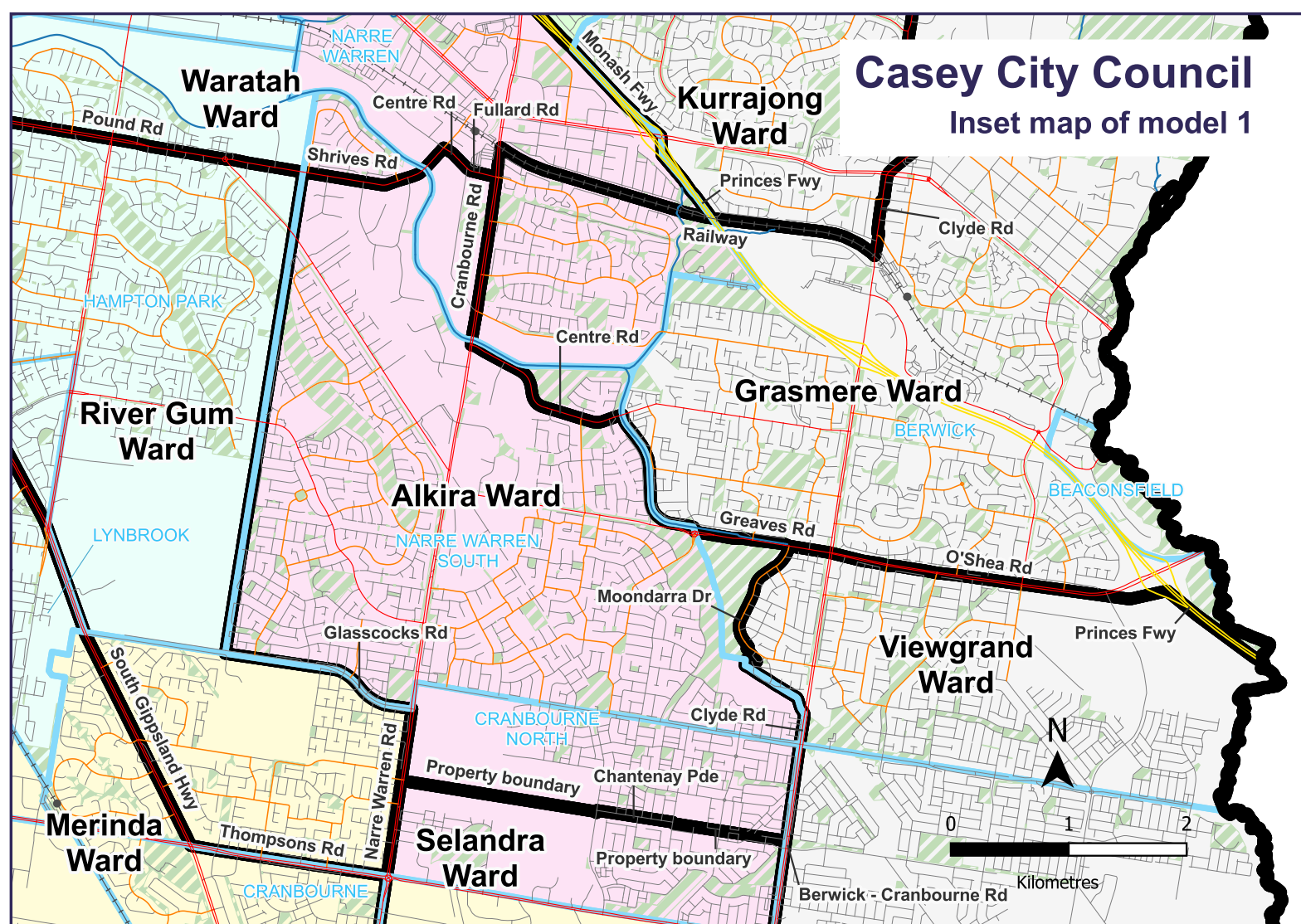


Layers for alignment:  
© State of Victoria (Department of Energy, Environment and Climate Action)

Disclaimer: This content is provided for information purposes only. While every effort has been made to ensure accuracy and authenticity of the content, the Victorian government does not accept any liability to any person for the information provided.

# Casey City Council

## Inset map of model 1



## Inset map 2 of model 1

